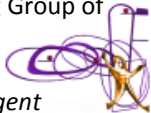


Institutional Profile

Geophysical Applications Processing s.r.l.
is a spin-off company of *Politecnico di Bari*,
established on February 2006,
whose mission is to develop
products, processes and
services with technological
and scientific value in the field of
satellite remote sensing and related
software/hardware technologies, with a
focus on Geomatic solutions and applications.

All the activity is performed on the basis of
competencies and pay-offs of research projects,
particularly in the Remote Sensing Group of
the *Department of Physics of Bari*,
in collaboration with the
*Institute for high studies on Intelligent
Automation Systems (ISSIA)* of the *National
Council of Research (CNR)*, based in Bari, Italy.



Shareholders of GAP are *Politecnico di Bari*,
Planetek Italia srl, *SITAEL spa*, as well as experts
and professionals including Professors of
Polytechnic of Bari and University of
Bari, Engineers and Researchers of the National
Research Council of Italy.

GAP srl is member of the Association of Italian
Small and Medium Aerospace Enterprises
(AIPAS) and the Apulian Aerospace District.



**Geophysical
Applications
Processing
GAP s.r.l.**

Contacts

Legal Address:
*c/o Dipartimento Interateneo di Fisica
Via Amendola 173, 70126 Bari, ITALY*

Phone +39 080 544 3224/2396

Fax +39 080 544 3224/3144

email: info@gapsrl.eu

<http://www.gapsrl.eu>

FISCAL CODE/VAT: 06424840723



**Products
Services**

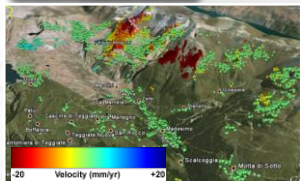


a POLIBA spin-off company

GeoHazards Monitoring

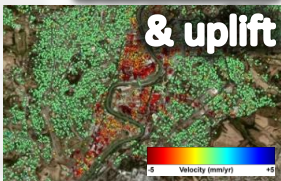
Advanced multi-temporal SAR and DInSAR analyses for satellite survey, monitoring of hydrogeological instabilities and measurement of ground movements with sub-centimetric precision.

Landslides



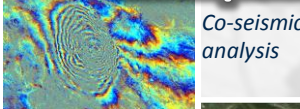
Madesimo (So, Italy)

Subsidence & uplift

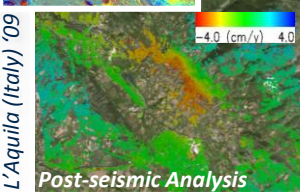


Tiber river, Rome

Earthquakes

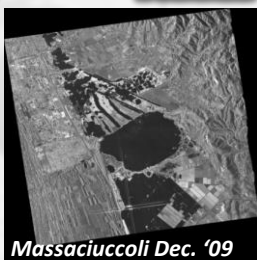


Co-seismic analysis



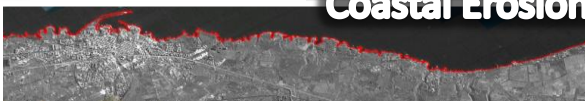
Post-seismic Analysis

Floods



Massaciuccoli Dec. '09

Coastal Erosion

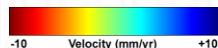


Infrastructure Stability

Satellite monitoring of the stability of transportation and other man-made structures.



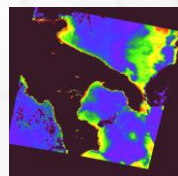
Campolattaro Dam (BN)



Highway A3 Napoli-Reggio Calabria

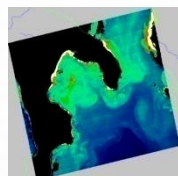
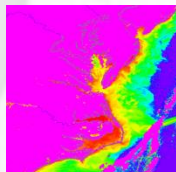
Sea Water Quality

Remote sensing with high resolution optical sensors (Quickbird, MERIS, MODIS, Landsat) for the monitoring of the health of marine ecosystems and their degree of eutrophication.



Chlorophyll maps

Suspended sediments and yellow substances

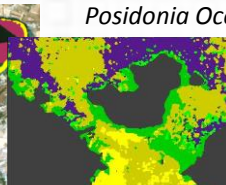


Sea surface temperature

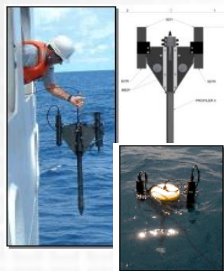
Classification of seagrass communities
Posidonia Oceanica



Taranto, Landsat



Tremi, QuickBird

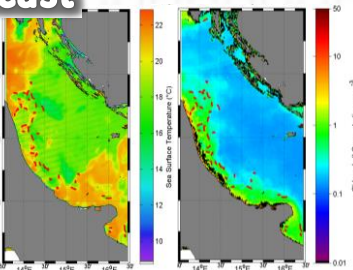


In situ measurements with SATlantic Profiler:

- Incident irradiance
- Emerging irradiance
- Chlorophyll
- Salinity
- Sea temperature

Fishery Forecast

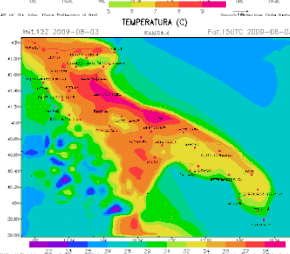
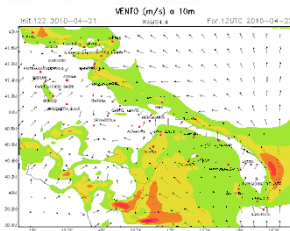
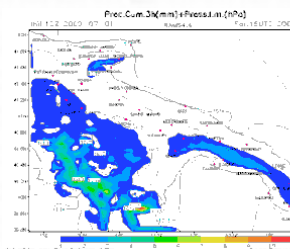
Fish catch lines detection and generation of potential fishing zones maps. Ocean Color Analysis (chlorophyll-a, sea surface temperature, primary productivity).



Meteorological Services

High resolution forecast services using Full Physics Numerical Weather Prediction Models (nonhydrostatic). Modeling chains for environmental risk prevention.

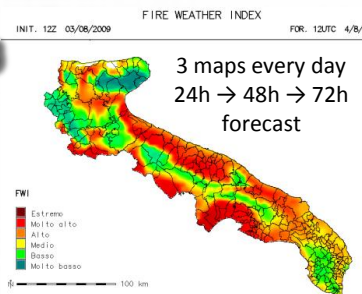
Agro-meteorological and climate data reanalysis.



72 h forecast maps with hourly frequency

Forest Fires

Prediction of daily forest fire hazard on municipal scale.



Air Quality

Aerosol Optical Thickness measurements



Cimel Sunphotometer CE 318N VBS5

